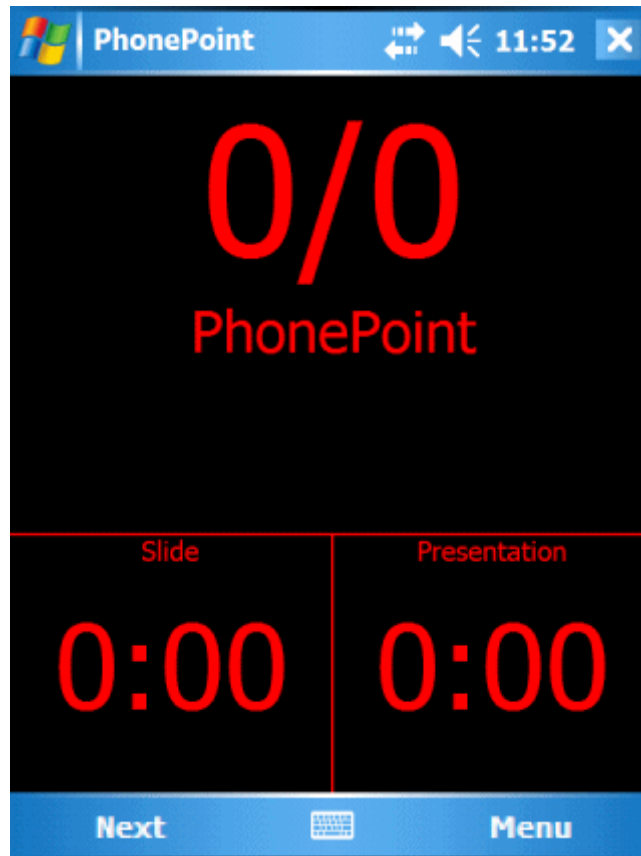


DEVLEX INDUSTRIES



PhonePoint, Version 4.12
Pocket PC

[User Guide](#)

Introduction	3
Feature Overview	3
System Requirements	3
Getting Started.....	4
PC Setup.....	4
Setting Bluetooth Discoverability Mode	6
Setting the Microsoft Bluetooth Driver's Discoverability Mode.....	6
Setting the Widcomm Bluetooth Driver's Discoverability Mode	7
Setting the IVT BlueSoleil Bluetooth Driver's Discoverability Mode	8
Bluetooth Serial Port Configuration.....	9
IVT BlueSoleil Serial Port Setup.....	11
PocketPC Installation	12
Connecting for the First Time	12
Basic Usage	13
Sample screenshot	13
Slide Navigation	13
Options Menu	13
Open Presentation.....	14
Slide Notes.....	15
Licensing.....	16
Troubleshooting	17
Connectivity Problems.....	17
FAQ	18

Introduction

PhonePoint is the professional wireless presentation tool. It has been designed from the ground up as a tool for presenters; slowly fine tuned with feedback from these professionals, people for whom presentations play an essential role in their job.

Whether an occasional PowerPoint user or, if indeed, presentations are a critical part of your job, PhonePoint will give you a competitive and polished edge when delivering PowerPoint presentations. With PhonePoint you can concentrate upon just the presentation and the audience, leaving the PC well alone.

Feature Overview

- PhonePoint allows you, remotely from your phone, to move Forward, Backward and Restart your presentation.
- Seamless Bluetooth Integration.
- Simple configuration - works right out of the box! Direct access to the bluetooth stack, no slow browsing-for bluetooth devices or time spent attempting to connect-to a Bluetooth device - it just works!
- Ideal for presentations using a projector - freeing you up to stand next to your presentation. No more sneaky change-slide hand signals to a colleague positioned next to the PC.
- Large and Clear display of the Current Slide's Title and Position.
- Keep your presentation on track - counters display the time spent on the current slide and for the total presentation.
- Quickly (and privately) access the Speaker Notes for the Current Slide on the phone's screen.
- Supports all phones in their native screen resolutions.
- Works wirelessly up to 10 meters - 30 foot from your PC.

System Requirements

- Microsoft PowerPoint 2000 or later (including Microsoft PowerPoint 2007).
- Windows XP or Windows Vista.
- A Pocket PC 2003 \ 2005 device. (PhonePoint also supports Symbian Series60 (version 1,2 or 3) and Microsoft Smartphone 2003 \ 2005).
- Bluetooth PC support, PhonePoint has Native support for Microsoft and Widcomm (Broadcom) and Bluetooth Serial Port support for use with other Bluetooth configurations (e.g. IVT BlueSoleil).

Getting Started

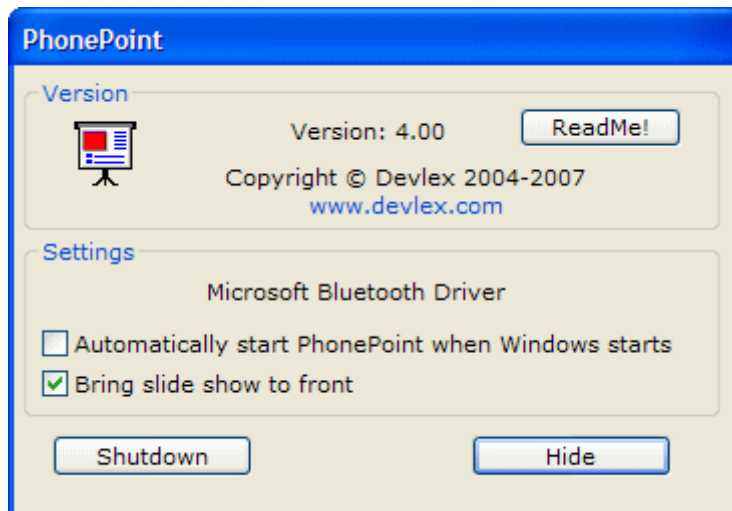
PC Setup

Step 1: Install PhonePoint by running the PhonePoint_v4_10_PocketPC.exe file on your PC. During installation you will be prompted to install PhonePoint onto your PocketPC.

Step 2: Launch PhonePoint on the PC from the Start menu, an icon will appear in the PC's system tray:



Step 3: Click on the icon, the PhonePoint dialog will appear:



Note the Bluetooth driver in use, in the example above "Microsoft Bluetooth Driver"; knowing which Bluetooth driver your PC is using will help with step 4.

Step 4: Set the PC's Bluetooth Mode to Discoverable.

In order for your phone to locate your PC, its bluetooth mode must be set to "Discoverable".

The method for setting your PC's Bluetooth mode varies between Bluetooth Stacks, some common examples are shown in the following sections.

Note: Bluetooth Discovery only needs to be turned on when attempting to discover a PC from your phone, so after successfully connecting once from the Phone to the PC, Bluetooth discovery can be turned off.

Next Step?

If your PC has Microsoft or Widcomm Bluetooth driver, after setting Bluetooth discovery on, there is no further configuration required, jump ahead to Phone Setup.

If PhonePoint does not have native support for your PC's bluetooth configuration you can still use PhonePoint by configuring it to use a Bluetooth Serial Port, as described in the Serial Port Configuration section.

Setting Bluetooth Discoverability Mode

Setting the Microsoft Bluetooth Driver's Discoverability Mode

You only need to follow these steps if your PC is running the Microsoft Bluetooth Stack.

Open "Control Panel \ Network and Internet Connections \ Bluetooth Devices".

Select the "Options" tab.

Ensure "Turn discovery on" is checked.



Setting the Widcomm Bluetooth Driver's Discoverability Mode

You only need to follow these steps if your PC is running the Widcomm Bluetooth Stack.

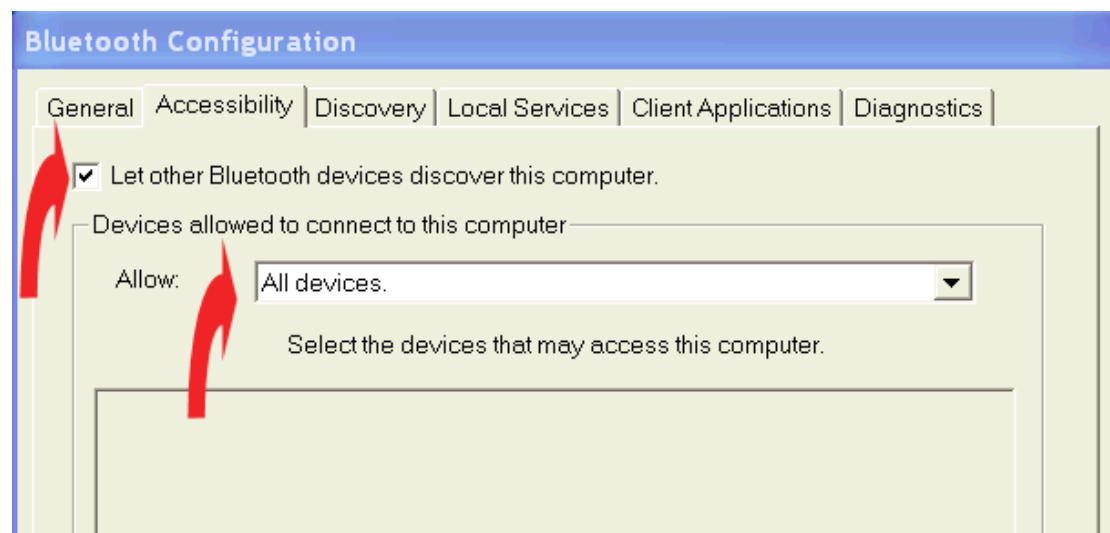
Right-click on the Bluetooth icon in your PC's system tray.

Select "Bluetooth Configuration".

Select the "Accessibility" tab.

Ensure the "Let other Bluetooth devices discover this computer" is checked.

Ensure the "Devices allowed to connect to this computer" is set to "All Devices".



Setting the IVT BlueSoleil Bluetooth Driver's Discoverability Mode

You only need to follow these steps if your PC is running the IVT BlueSoleil Bluetooth Stack.

Right-click on the Bluetooth icon in your PC's system tray.

Select "Display".

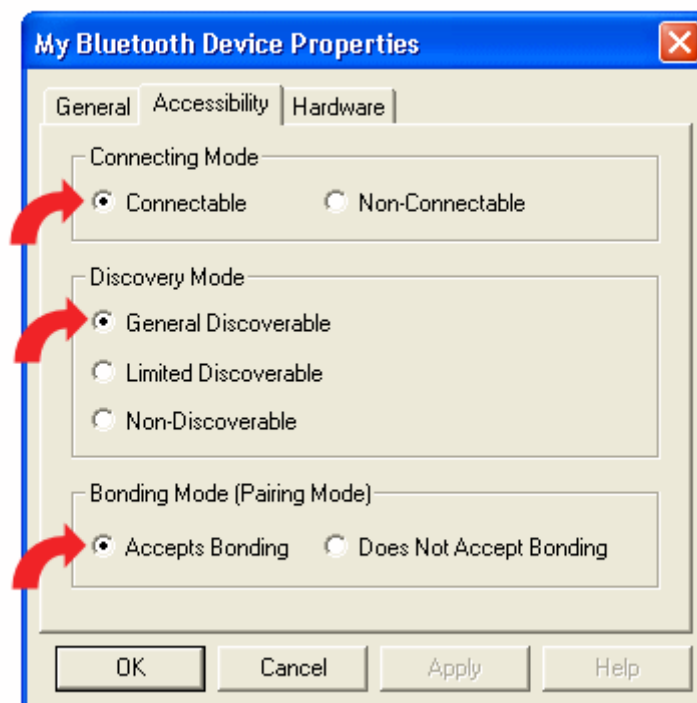
From the "My Bluetooth" menu, Select "Device Properties...".

Select "Accessibility" tab.

Ensure the "Connecting Mode" is set to "Connectable".

Ensure the "Discovery Mode" is set to "General Discoverable".

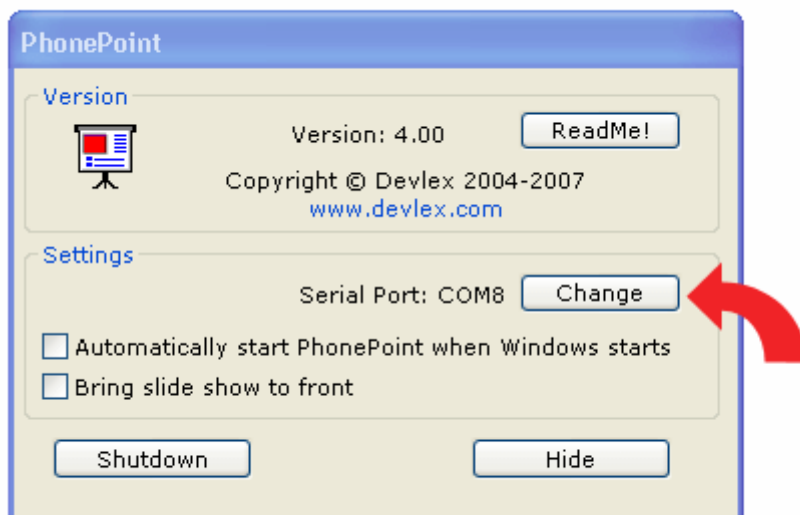
Ensure the "Bonding Mode" is set to "Accepts Bonding".



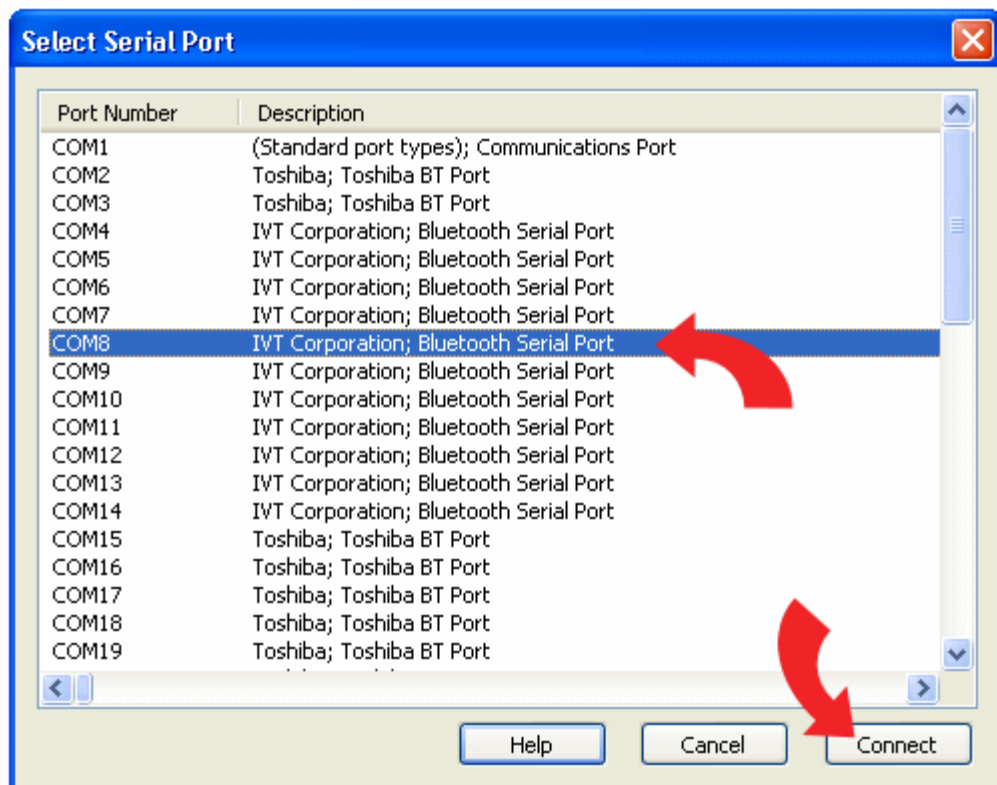
Bluetooth Serial Port Configuration

You only need to follow these steps if PhonePoint does not have native support your PC's Bluetooth stack, i.e. it is not running the Microsoft or Widcomm Bluetooth Stacks.

1. Click the "Change" button next to the Serial Port identifier of in the PhonePoint PC app.



2. From the Select Serial Port dialog, select the port number your Bluetooth stack uses for its Serial Port Service and select "Connect".



You may find the required serial port number:

- a) Listed inside your System tray's Bluetooth Application, under Serial Port Service.
- b) Displayed on your PC when the PhonePoint phone app attempts to change a slide, i.e. try hitting "Next" on the phone application.

An example is shown in the following section for the IVT BlueSoleil Bluetooth stack.

3. After changing the serial port, select "Next" on the phone app. If your PowerPoint slide show is displayed on your PC, congratulations everything is setup!

If you are not sure which port to use, try them all, one at a time.

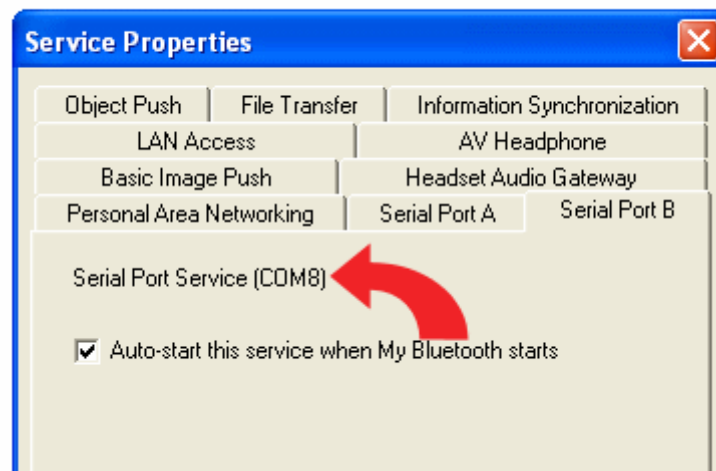
If problems persist, please contact Devlex at support@devlex.com.

IVT BlueSoleil Serial Port Setup

The Serial Port number to use if your PC is running the IVT BlueSoleil Bluetooth stack can be found by:

Right-click on the Bluetooth icon in your PC's system tray.
Select "Display".
From the "My Services" menu, Select "Properties...".
Select the "Serial Port B" tab.

The required Comm Port number is shown at the top of the dialog:



PocketPC Installation

PhonePoint can be installed on either the internal memory or an external storage card.

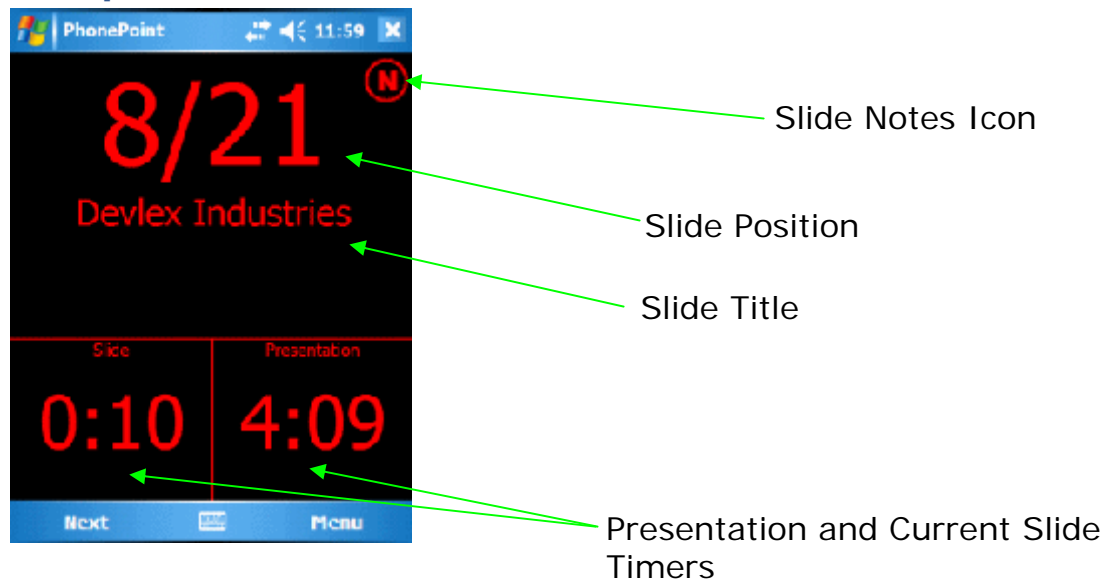
Connecting for the First Time

After installing PhonePoint on the PC and on the PocketPC, follow this guide to illustrate how easy PhonePoint is to use:

1. Launch the PhonePoint PC program.
2. Open a PowerPoint presentation on the PC.
3. Launch the PhonePoint PocketPC program.
4. From the PocketPC app's menu choose "Select PC". Select your PC from the list. If your PC is not found in the list, check it has Bluetooth turned on (and set to Discoverable) and try again.
5. Move the joystick right on the PocketPC – the slide show will start on your PC!

Basic Usage

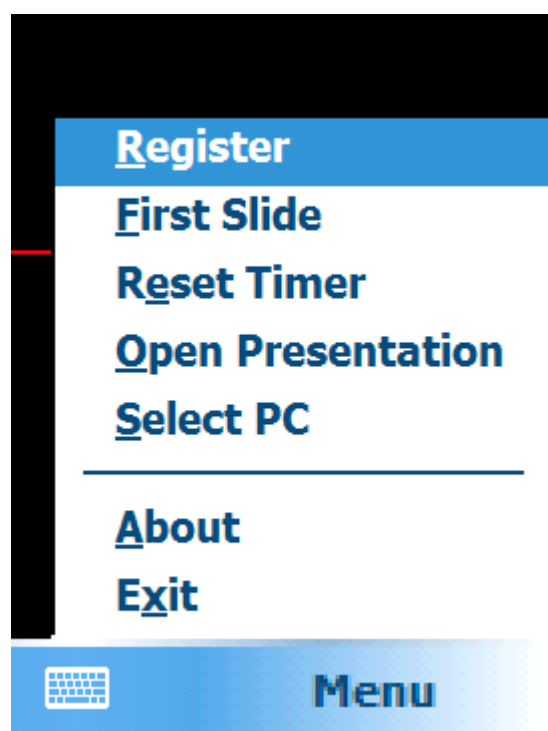
Sample screenshot



Slide Navigation

Use the Joystick or menu commands to navigate through the PowerPoint presentation.

Options Menu



Register – Enter your registration code.

First Slide – Restarts presentation at slide one.

Reset Timer – Resets both the Current Slide and Presentation timers.

Open Presentation – Open the PC's last used PowerPoint Presentation.

Select PC – Switches PC.

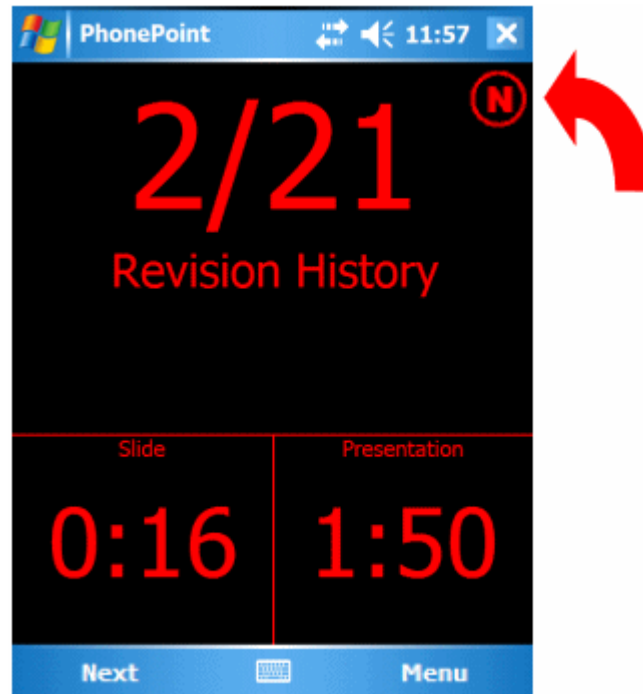
About – Program and Support information.

Open Presentation

This menu command opens the last used PowerPoint presentation by searching through the “recently used” list of office applications, looking for a “.ppt” or “.pps” type of file. Upon finding a suitable file, the file is launched, opening the PowerPoint application if necessary.

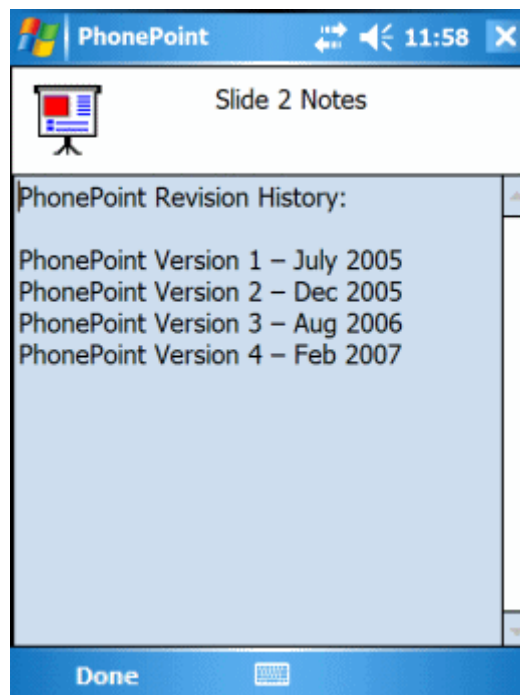
Slide Notes

If speaker notes are available for a particular slide the Slide Notes icon is displayed on the Phone:



To view the speaker notes view, either:

1. Press the Notes Icon.
2. Press and hold the Joystick button (for about 1 second).
3. Press and hold anywhere in the screen (for about 1 second).



Licensing

Enter your license key using the PocketPC application. The license key is verified on the PocketPC not the PC, so you can use a licensed PocketPC to control any number of PCs.

Troubleshooting

Connectivity Problems

Please ensure Bluetooth is correctly functioning on your PC (i.e. you can browse other Bluetooth devices), and that Bluetooth is enabled on your PocketPC. Your PC must be in discoverable mode when using the Select PC command on your phone. Please contact us if you cannot solve connectivity problems at support@devlex.com or visit our website: www.devlex.com.

FAQ

How does the trial version differ from the regular version?

The functionality of the trial and regular versions are identical. The trial software simply contains popup banners to request registration. There is no trial expiration period. After purchasing a registration code, you do not need to re-install the software, simply enter the registration code on the PocketPC application.

How do I install PhonePoint?

Install the .exe file on your PC, then install the .cab file on your PocketPC. Please check out the release notes for further details.

How much memory does PhonePoint use on my device?

PhonePoint uses about 70K of PocketPC memory, i.e. it is nice and small.

How do I enter the registration code?

Enter the registration code into the PocketPC application, from the Register menu item.

How much do upgrades cost?

Upgrades are supplied free of charge. Always have been, always will be.

Can I use PhonePoint with multiple PCs?

Yes. The registration is tied to the PocketPC (rather than a PC). Simply install the PC software on a different PC and press "Select PC" from the PocketPC application.

Which versions of PowerPoint does PhonePoint control?

Microsoft PowerPoint 2000 or later, running on Windows XP or Vista.

How do I view the Speaker Notes for a slide?

Either press and hold the Joystick button for about 1 second, OR press and hold the screen for about 1 second (easy to do with your thumb!) OR tap the Notes icon on the screen.

What does "Open Presentation" actually do?

The "Open Presentation" phone menu command will open the most recently used presentation in PowerPoint, starting PowerPoint if necessary.

Why do some slides not display a title?

If there isn't a title text field on a slide, perhaps it has only a picture or is a continuation of a previous slide, PhonePoint will not display a title. The slide position will, of course, still be displayed.

Does PhonePoint work with Vista?

Yes, PhonePoint is fully compatible with Microsoft Vista and Office 2007.

Why Does PhonePoint expose a TCP Port?

PhonePoint opens a TCP port (port number 29960) to accept incoming connections from WiFi devices.