

PhonePoint, version 3.0

PhonePoint allows you to remotely control a Microsoft PowerPoint presentation from your phone!

System Requirements

- Microsoft PowerPoint 2000 or later
- Windows 2000 or Windows XP
- A Microsoft Smartphone 2003 \ 2005
- Bluetooth PC support

Quick Start Guide

1. Ensure Bluetooth is enabled on **both** the PC and the Phone, and the PC's Bluetooth device state is set to "**Discoverable**".
2. Install PhonePoint on the PC
3. Launch the PhonePoint.exe application from the Start menu, an icon will appear in the system tray.
4. Open a PowerPoint presentation on the PC.
5. Install the phone application on either the phone's internal memory or the removable memory card.
6. Launch the PhonePoint application on the phone.
7. From the Phone app's menu choose "Select PC". Select your PC from the list. If your PC is not found in the list, check it has Bluetooth turned on (and set to Discoverable) and try again.
8. Click the "Next" button on the phone. Enter your registration code or select "Trial" to continue. Click "Next" again.
9. If your PowerPoint slide show is displayed on your PC, congratulations everything is setup! Use the Phone's joystick to navigate through your presentation.

You will only need to repeat this setup if you wish to switch to a different PC.

If the slide show has not started on your PC, you will need to follow the additional steps below.

Additional Setup

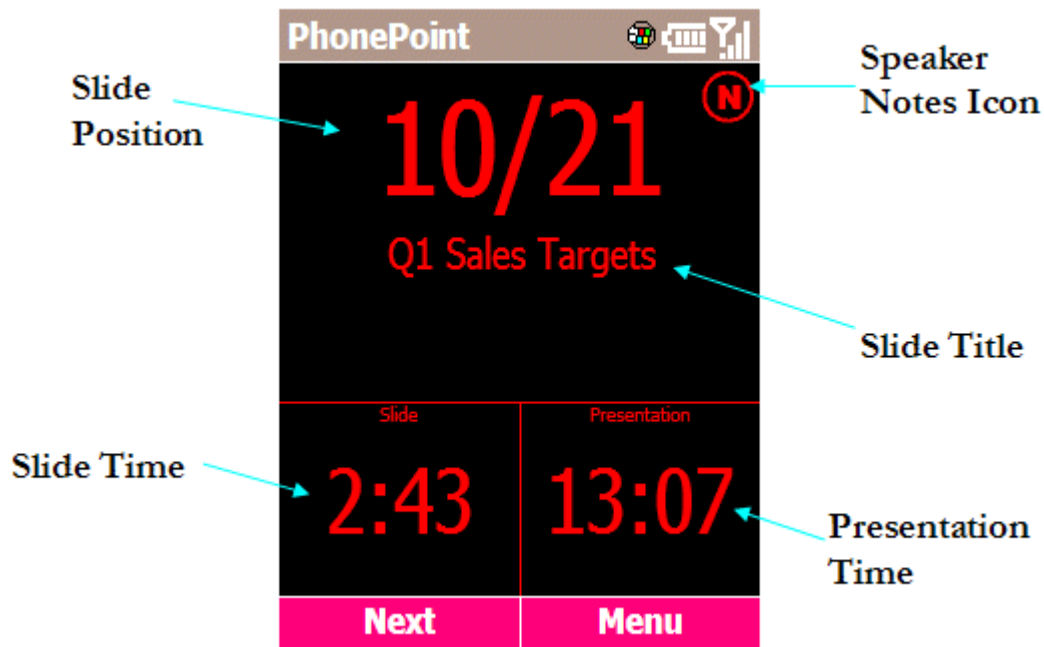
PhonePoint should configure itself automatically on most Bluetooth stacks; however some Bluetooth configurations may require some additional setup.

You only need to follow these steps if PhonePoint is not working correctly.

1. Open the PhonePoint PC application by clicking on the slideshow icon in the PC's system tray.
2. Click the "Change" button next to the Serial Port identifier.
3. From the Select Serial Port dialog, select the port number your Bluetooth stack uses for its Serial Port Service, and select "Connect". You may find the required serial port number:

- a. Listed inside your System tray's Bluetooth Application, under Serial Port Service.
- b. Displayed on your PC when the PhonePoint phone app attempts to change a slide, i.e. try hitting "Next" on the phone application.
4. After changing the serial port, select "Next" on the phone app. If your PowerPoint slide show is displayed on your PC, congratulations everything is setup!
5. If you are not sure which port to use, try them all, one at a time.
6. If problems persist, please contact Devlex at support@devlex.com

Screen Shot



Further Information

Licensing: Enter your license key using the Phone application. The Phone application prompts for a license key every time it is started.

The license key is verified on the phone not the PC, so you can use a licensed phone to control any number of PCs.

Speaker Notes: If a slide has accompanying speaker notes, an icon (N) is displayed next to the slide position numbers. To view (and switch back from) the speaker notes view, either:

1. Press the '#' key.
2. Press and hold the Joystick button (for about 1 second).

Bluetooth: PhonePoint accesses the Bluetooth stack directly; it does not require the prior launching of PC Suite, m-Router or any other Bluetooth connectivity application.

From a command prompt in the PhonePoint installation directory (by default, C:\Program Files\PhonePoint) run the command "PhonePoint -info" to report the PC PhonePoint Bluetooth setup.

Open Presentation: The "Open Presentation" phone menu command will open the most recently used file in PowerPoint.

Connectivity Problems: Please ensure Bluetooth is correctly functioning on your PC (i.e. you can browse other Bluetooth devices), and that Bluetooth is enabled on your phone. Your PC must be in discoverable mode when using the Select PC command on your phone. Please contact us if you cannot solve connectivity problems.

In the event of problem or general feedback, please contact us at support@devlex.com.

© 2004-2006 Devlex. All rights reserved.